



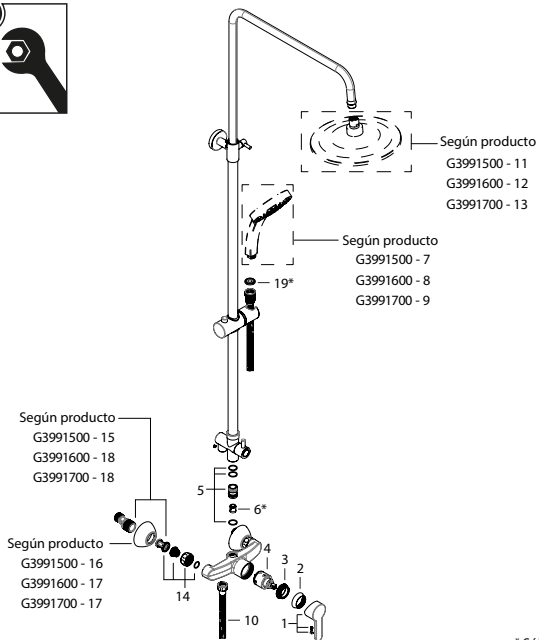
gala

MENA





G3991500
G3991600
G3991700

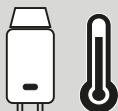
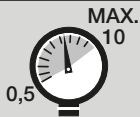


* Sólo G3991600 y G3991700



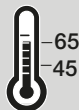
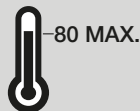
P

P
bar



T

°C



Q

(3 bar)

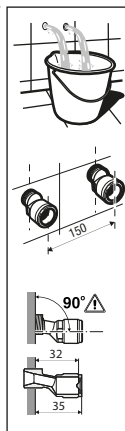
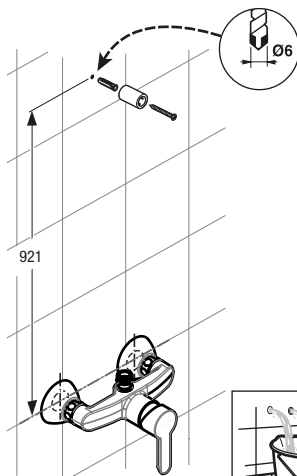
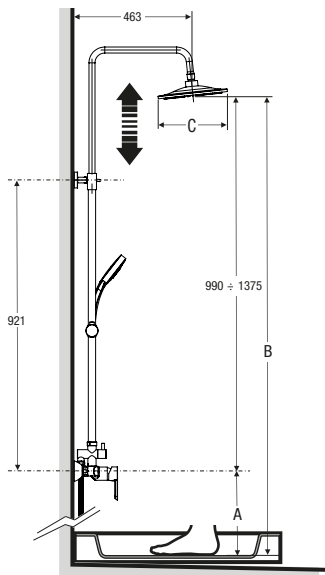
l/min



12



12



A	900	1000	1100	1200
B	1890-2275	1990-2375	2090-2475	2190-2575

	C
G3991500	Ø 230
G3991600	Ø 220
G3991700	Ø 250

1- G3975100
 2- G3972200
 3- G3972100
 4- G3863500
 5- G3863600
 6- G3863700
 7- G3974400

8- G4835000
 9- G4835100
 10- G3974500
 11- G3863800
 12- G3863900
 13- G3864000
 14- G3973800

15- G3864100
 16- G3864200
 17- G3975300
 18- G3974000
 19- G3974200

